

CARGO



AUTO



SPORT



# STEALTH TRAILERS



WE STAND WITH OUR MILITARY



CONSTRUCTION



SPECIALTY



OPTIONS





# WELCOME TO STEALTH TRAILERS

Since our founding in 2008, Stealth Trailers has become the value and volume and quality leader in enclosed cargo trailers throughout the Midwest and beyond. From our inception, Stealth has been an innovator in the crowded cargo trailer space. Beginning with our first, cutting-edge, signature slant-wedge aerodynamic profile, now copied throughout the industry, Stealth Trailers were destined to be different.

The difference starts with providing our customers more value – never an overused word at Stealth – we understand that when you’re

spending your hard-earned money, value is at the very top of your purchase priority.

We’re committed to quality, innovation, smart use of the finest materials and great products sold through our professional dealer network.

Stealth Trailer brands are like no other. The Titan, Predator and Liberty are established as uncompromised model brands – copied but never matched by our competition.



## TABLE OF CONTENTS

CARGO TRAILERS .....	Pg. 3
TITAN .....	Pg. 5
COBRA .....	Pg. 6
LIBERTY .....	Pg. 7
MUSTANG SE .....	Pg. 8
AUTO TRAILERS .....	Pg. 9
SPORT TRAILERS .....	Pg. 10
PREDATOR .....	Pg. 11
APACHE .....	Pg. 12
SPECIALTY TRAILERS .....	Pg. 13
OPTIONAL EQUIPMENT .....	Pg. 18



## STEALTH TRAILERS CORE VALUES

1. We aspire to be the best.
2. We have credibility through communication.
3. We foster a team-first environment.
4. Enjoy the journey and make friends along the way.



# CARGO

TITAN | COBRA | LIBERTY | MUSTANG SE



**Stealth Trailers Notice:**

Due to constant product improvements, and changes in specifications, component parts and standard/optional equipment, all Stealth Trailers products are subject to change without notice or obligation. Product photography or diagrams may show equipment that is optional. Stealth Trailers reserves the right to make changes in pricing and models and to discontinue models without notice or obligation. Components, parts or chassis may have been manufactured at times other than the model year indicated. All capacities are approximate and dimensions are nominal. All dry weights are based on standard models with basic features and do not include optional features or equipment. Various components and features may differ to conform to local codes. The individual manufacturers not Stealth Trailers warrant appliances and other components.

Stealth Enterprises, LLC – © Sept. 2022 Printed in U.S.A.

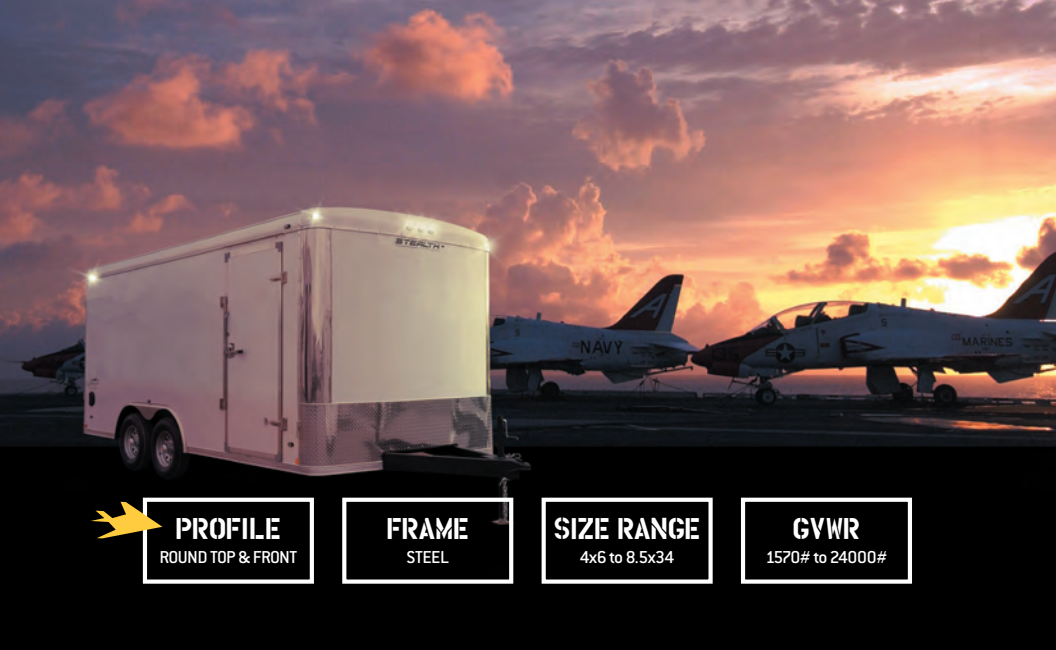


# TITAN



- PROFILE**  
FLAT TOP SLANT WEDGE
- FRAME**  
STEEL
- SIZE RANGE**  
4x6 to 8.5x34
- GVWR**  
1570# to 24000#

# LIBERTY



- PROFILE**  
ROUND TOP & FRONT
- FRAME**  
STEEL
- SIZE RANGE**  
4x6 to 8.5x34
- GVWR**  
1570# to 24000#

# Mustang SE



- PROFILE**  
FLAT TOP SLANT WEDGE
- FRAME**  
STEEL
- SIZE RANGE**  
5x6 to 8.5x24
- GVWR**  
1880# to 12000#

# COBRA



- PROFILE**  
FLAT TOP SLANT WEDGE
- FRAME**  
ALUMINUM
- SIZE RANGE**  
4x6 to 8.5x34
- GVWR**  
1880# to 12000#





Compare the Stealth Titan feature-for-feature to the competition and we crush them. For heavy-duty hauling and peace of mind, you won't find a better value than our most popular model.

Built with durability and longevity in mind, when you go with Stealth, you will remember the Titans.



Shown with Optional Black Out Package

## TITAN FLAT TOP WEDGE FRONT

The Titan model is a premium cargo trailer designed for the rigors of heavy, daily use. The top-quality construction and impressive list of standard features make this a Titan of a trailer!

## SPECIFICATION

\*\*\* HIGHLIGHTS \*\*\*

	4 x 6 SA	5 x 8 SA	5 x 10 SA	6 x 10 SA	6 x 12 SA	7 x 14 TA	7 x 16 TA	8.5x20 TA2	8.5x32 TTA3
<b>Overall Length</b>	9'-8"	12'-0"	14'-0"	14'-0"	16'-0"	18'-6"	20'-6"	25'-0"	37'-0"
<b>Overall Width</b>	68"	80"	80"	92"	92"	102"	102"	102"	102"
<b>Overall Height*</b>	5'-8"	6'-8"	6'-8"	7'-8"	7'-8"	7'-10"	7'-10"	8'-5"	8'-7"
<b>Platform Height</b>	18"	18"	18"	18"	18"	20"	20"	21"	23"
<b>Interior Height</b>	4'-0"	5'-0"	5'-0"	6'-0"	6'-0"	6'-0"	6'-0"	6'-6"	6'-6"
<b>Interior Overall Length</b>	7'-8"	9'-8"	11'-8"	11'-8"	13'-8"	16'-2"	18'-2"	22'-2"	34'-2"
<b>Interior Width</b>	45"	57"	57"	69"	69"	81"	81"	96"	96"
<b>Payload Capacity</b>	1570	2240	2120	1915	1810	4970	4765	4090	10960

\* Overall height does not include roof vents or A/C. Please add 4" for roof vents and 13" for A/Cs.

\*\*The above represents our most popular models. See your Stealth dealer to order custom sizes.



\*\*\* POPULAR \*\*\*

## STANDARD FEATURES

- 16" O/C Steel Tube Wall Posts
- 16" O/C Preformed Steel Crossmembers
- 24" O/C Steel Tube Roof Members
- 48" Tongue on 5' & 6' Models
- 54" Tongue on 7' Models
- 60" Tongue on 8.5' Models
- Triple Tube Tongues on 20' & Longer
- Spring Axles with 4" Drop
- 2000# Drop Leg Tongue Jack
- Radial Tires on Steel Wheels
- .030 Screwless Aluminum Exterior [12 Standard Colors]
- [1] Pair Plastic Flo-Thru Sidewall Vents
- 3" Top & Bottom Trim
- Plastic Corner Blocks on Top Trim
- ATP Fenders
- 24" ATP Slanted Stoneguard [16" on 4' Models]
- 24" Slant Wedge Front on 4', 5' & 6' Models
- 30" Slant Wedge Front on 7' Models
- 36" Slant Wedge Front on 8.5' Models
- 1 Piece Aluminum Roof
- 3/8" Drymax Wall Liner
- 3/4" Drymax Flooring
- 32" Side Door on 6' & 7' Models
- 48" Side Door on 8.5' Models [No side Door on 4' & 5' Models]
- Rear Ramp Door or Double Rear Doors
- Stainless Steel Door Hardware
- Beavertail on 8.5'x14' and Longer
- [4] 5000# D-Rings on 8.5'x14' and Longer
- L.E.D. Marker Lights
- L.E.D. Strip Tail Lights
- [2] L.E.D. Interior Dome Lights with Switch
- Limited 3-Year Structural Warranty

**COMPLETE DETAILS**

[stealthtrailer.com/titan](http://stealthtrailer.com/titan)





★ ★ ★ POPULAR ★ ★ ★

## STANDARD FEATURES

- 16" O/C Aluminum Tube Wall Posts
- 16" O/C Aluminum Tube Crossmembers
- 24" O/C Aluminum Tube Roof Members
- 48" Tongue on 5' & 6' Models
- 54" Tongue on 7' Models
- 60" Tongue on 8.5' Models
- Triple Tube Tongues
- Spring Axles with 4" Drop
- 2000# Drop Leg Tongue Jack
- Radial Tires on Aluminum Wheels
- .030 Screwless Aluminum Exterior (12 Standard Colors)
- (1) Pair Plastic Flo-Thru Sidewall Vents
- 3" Top & Bottom Trim
- Plastic Corner Blocks on Top Trim
- ATP Fenders
- 24" ATP Slanted Stoneguard
- 24" Slant Wedge Front on 5' & 6' Models
- 30" Slant Wedge Front on 7' Models
- 36" Slant Wedge Front on 8.5' Models
- 1 Piece Aluminum Roof
- 3/8" Drymax Wall Liner
- 3/4" Drymax Flooring
- 32" Side Door on 6' & 7' Models
- 48" Side Door on 8.5' Models (No Side Door on 4' & 5' Models)
- Rear Ramp Door or Double Rear Doors
- Stainless Steel Door Hardware
- Beavertail on 8.5'x14' and Longer
- (4) 5000# D-Rings on 8.5'x14' and Longer
- L.E.D. Marker Lights
- L.E.D. Strip Tail Lights
- (2) L.E.D. Interior Dome Lights with Switch
- Limited 3-Year Structural Warranty

## COMPLETE DETAILS

[stealthtrailer.com/cobra](http://stealthtrailer.com/cobra)



Look no further for a tough, easy-towing aluminum trailer. The Stealth Cobra is the most value packed, affordable choice in the industry. Get the premium features you want in an all-aluminum unit without getting bit by the price! See why Cobra strikes the industry as the value leader in multi-use aluminum cargos.



Shown with Optional Black Out Package

## SPECIFICATION

★ ★ ★ HIGHLIGHTS ★ ★ ★

	5 x 8 SA	6 x 12 SA	7 x 12 TA	7 x 14 TA	7 x 16 TA	8.5 x 20 TA2	8.5 x 24 TA2	8.5 x 28 TA3	8.5 x 32 TTA3
<b>Overall Length</b>	12'-0"	16'-0"	16'-6"	18'-6"	20'-6"	25'-0"	29'-0"	33'-0"	37'-0"
<b>Overall Width</b>	80"	92"	102"	102"	102"	102"	102"	102"	102"
<b>Overall Height*</b>	6'-8"	7'-8"	7'-10"	7'-10"	7'-10"	8'-5"	8'-5"	8'-5"	8'-5"
<b>Platform Height**</b>	18"	18"	20"	20"	20"	21"	21"	21"	21"
<b>Interior Height</b>	5'-0"	6'-0"	6'-0"	6'-0"	6'-0"	6'-6"	6'-6"	6'-6"	6'-6"
<b>Interior Overall Length</b>	9'-8"	13'-8"	14'-2"	16'-2"	18'-2"	22'-8"	26'-8"	26'-8"	26'-8"
<b>Interior Width</b>	57"	69"	81"	81"	81"	96"	96"	96"	96"
<b>Payload Capacity</b>									

\* Overall height does not include roof vents or A/C. Please add 4" for roof vents and 13" for A/Cs. \*\* Platform height drops 4" with 48" beavertail and drops 5" with 72" beavertail.

\*\*\*The above represents our most popular models. See your Stealth dealer to order custom sizes.





When versatility is essential, Liberty answers the call.

The classic design of our Liberty trailer makes it the go-to base for commercial use. Contractors, landscapers, construction or concession, Liberty can be outfitted to fill all of your needs. See why the Liberty is the preferred choice of professionals.



Optional Wedge  
Front Available

## SPECIFICATION

\*\*\* HIGHLIGHTS \*\*\* Specifications for Liberty models. Certain applications may require frame upgrades.

	5 x 8 SA	5 x 10 SA	6 x 10 SA	6 x 12 TA	7 x 14 TA	7 x 16 TA	8.5 x 20 TA2	8.5 x 24 TA2	8.5 x 32 TTA3
<b>Overall Length</b>	12'-0"	14'-0"	14'-0"	16'-0"	18'-6"	20'-6"	25'-0"	29'-0"	37'-0"
<b>Overall Width</b>	80"	80"	92"	92"	102"	102"	102"	102"	102"
<b>Overall Height*</b>	6'-10"	6'-10"	7'-10"	7'-11"	8'-1"	8'-1"	8'-9"	8'-9"	8'-11"
<b>Platform Height**</b>	18"	18"	18"	19"	20"	20"	21"	21"	23"
<b>Interior Height</b>	5'-0"	5'-0"	6'-0"	6'-0"	6'-0"	6'-0"	6'-6"	6'-6"	6'-6"
<b>Interior Overall Length</b>	8'-5"	10'-5"	10'-5"	12'-5"	14'-5"	16'-5"	20'-6"	24'-6"	32'-6"
<b>Interior Width</b>	57"	57"	69"	69"	81"	81"	96"	96"	96"
<b>Payload Capacity</b>	2210	2120	1915	5220	4970	4765	4090	3510	9815

\* Overall height does not include roof vents or A/C. Please add 4" for roof vents and 13" for A/Cs.

\*\* Platform height drops 4" with 48" beavertail and drops 5" with 72" beavertail.

\*\*\*The above represents our most popular models. See your Stealth dealer to order custom sizes.



\*\*\* POPULAR \*\*\*

## STANDARD FEATURES

- 16" O/C Steel Tube Wall Posts
- 16" O/C Preformed Steel Crossmembers
- 24" O/C Steel Tube Roof Members
- 48" Tongue on 5' & 6' Models
- 54" Tongue on 7' Models
- 60" Tongue on 8.5' Models
- Triple Tube Tongues on 20' & Longer
- Spring Axles with 4" Drop
- 2000# Drop Leg Tongue Jack
- Radial Tires on Steel Wheels
- .030 Screwless Aluminum Exterior [12 Standard Colors]
- [1] Pair Plastic Flo-Thru Sidewall Vents
- 3" Bottom Trim
- .080 Extruded Roof Covers
- ATP Fenders
- 24" ATP Stoneguard [16" on 4' Models]
- Round Top Roof w/Fiberglass Cap [Wedge Front are 0 pt.]
- 1 Piece Aluminum Roof
- 3/8" Drymax Wall Liner
- 3/4" Drymax Flooring
- 32" Side Door on 6' & 7' Models
- 48" Side Door on 8.5' Models [No side Door on 4' & 5' Models]
- Rear Ramp Door or Double Rear Doors
- Stainless Steel Door Hardware
- Beavertail on 8.5'x14' and Longer
- [4] 5000# D-Rings on 8.5'x14' and Longer
- L.E.D. Marker Lights
- L.E.D. Strip Tail Lights
- [2] L.E.D. Interior dome Lights with Switch
- Limited 3-Year Structural Warranty

**COMPLETE DETAILS**

[stealthtrailer.com/liberty](http://stealthtrailer.com/liberty)





\*\*\* POPULAR \*\*\*

## STANDARD FEATURES

- 24" O/C Steel Preformed Wall Posts
- 24" O/C Steel Preformed Wall Crossmembers
- 24" O/C Steel Tube Roof Members
- 48" Tongue on 5' & 6' Models
- 54" Tongue on 7' Models
- 60" Tongue on 8.5' Models
- Triple Tube Tongues on 20' & Longer
- Spring Axles with 4" Drop
- 2000# Drop Leg Tongue Jack
- Radial Tires on Steel Wheels
- .024 Screwless Aluminum Exterior (White, Black, Pewter or Charcoal)
- (1) Pair Plastic Flo-Thru Sidewall Vents
- 3" Top Trim & 1 1/2" Bottom Trim
- Plastic Corner Blocks on Top Trim
- ATP Fenders
- 24" ATP Slanted Stoneguard
- 24" Slant Wedge Front on 5' & 6' Models
- 30" Slant Wedge Front on 7' Models
- 36" Slant Wedge Front on 8.5' Models
- 1 Piece Aluminum Roof
- 3/8" Drymax Wall Liner
- 3/4" Drymax Flooring
- 32" Side Door on 6' & 7' Models
- 48" Side Door on 8.5' Models (No side Door on 5' Models)
- Rear Ramp Door or Double Rear Doors
- Stainless Steel Door Hardware
- Beavertail on 8.5'x14' and Longer
- (4) 5000# D-Rings on 8.5'x14' and Longer
- L.E.D. Marker Lights
- L.E.D. Strip Tail Lights
- (1) L.E.D. Interior dome Light with Switch
- Limited 3-Year Structural Warranty

**COMPLETE DETAILS**

[stealthtrailer.com/mustang-se](http://stealthtrailer.com/mustang-se)



Some would call the Stealth Mustang an "entry-level" trailer because of its price. But we've value packaged the Mustang with so many added standard features it makes this cargo series a top seller.

Compare the Stealth SE models with our competition feature-for-feature and you'll see that the Stealth Mustang fighter looks good, has rugged construction, and is backed by an industry leader – Stealth Trailers!



Shown with optional Two-Tone Package

## SPECIFICATION

\*\*\* HIGHLIGHTS \*\*\*

	5 x 8 SA	5 x 10 SA	6 x 10 SA	6 x 12 TA	7 x 12 TA	7 x 14 TA	7 x 16 TA	8.5 x 16 TA2	8.5 x 20 TA2	8.5 x 24 TA2
<b>Overall Length</b>	12'-0"	14'-0"	14'-0"	16'-0"	16'-6"	18'-6"	20'-6"	21'-0"	25'-0"	29'-0"
<b>Overall Width</b>	80"	80"	92"	92"	102"	102"	102"	102"	102"	102"
<b>Overall Height*</b>	6'-8"	6'-8"	7'-8"	7'-9"	7'-10"	7'-10"	7'-10"	8'-5"	8'-5"	8'-5"
<b>Platform Height</b>	18"	18"	18"	19"	20"	20"	20"	21"	21"	21"
<b>Interior Height</b>	5'-0"	5'-0"	6'-0"	6'-0"	6'-0"	6'-0"	6'-0"	6'-6"	6'-6"	6'-6"
<b>Interior Overall Length</b>	9'-8"	11'-8"	11'-8"	13'-8"	14'-2"	16'-2"	18'-2"	18'-8"	22'-8"	26'-8"
<b>Interior Width</b>	57"	57"	69"	69"	81"	81"	81"	96"	96"	96"
<b>Payload Capacity</b>	2240	2120	1915	5220	5175	4985	4765	4265	3825	3385

\* Overall height does not include roof vents or A/C. Please add 4" for roof vents and 13" for A/Cs.

\*\*The above represents our most popular models. See your Stealth dealer to order custom sizes.





## PACKAGE SHOWN HERE

- Available on Titan and Cobra Models
- Bullnose Front End w/16" O/C Roof Bows, Torsion Axle Upgrade, 40" Spread Axles
- White Vinyl Ceiling Liner, Colored Coves & Header and White Vinyl Walls
- Aluminum Star Wheels w/Radial Tires
- (2) Aluminum Directional Sidewall Salem Vents (IPO Std. Flo-Thru Vents)
- 3" Top & Bottom Trim
- Cast Aluminum Corners
- Rear Flare w/(2) Loading Lights
- 12V 40" LED Lights in Cove Moulding (IPO Std. Dome Lights)
- RV Flush Lock w/Barlock/Hinges and All Stainless Door Hardware

## VIPER PACKAGE

Shown with Optional  
Two-Tone Package  
Black Out Package

### Stealth Trailers Notice:

Due to constant product improvements, and changes in specifications, component parts and standard/optional equipment, all Stealth Trailers products are subject to change without notice or obligation. Product photography or diagrams may show equipment that is optional. Stealth Trailers reserves the right to make changes in pricing and models and to discontinue models without notice or obligation. Components, parts or chassis may have been manufactured at times other than the model year indicated. All capacities are approximate and dimensions are nominal. All dry weights are based on standard models with basic features and do not include optional features or equipment. Various components and features may differ to conform to local codes. The individual manufacturers not Stealth Trailers warrant appliances and other components.



**PREDATOR**  
ALL ALUMINUM



➔ **PROFILE**  
WEDGE FRONT

**FRAME**  
ALUMINUM

**SIZE RANGE**  
7x17 to 8.5x33

**GVWR**  
7000# to 15600#

**APACHE**  
ALL ALUMINUM



➔ **PROFILE**  
WEDGE FRONT

**FRAME**  
ALUMINUM

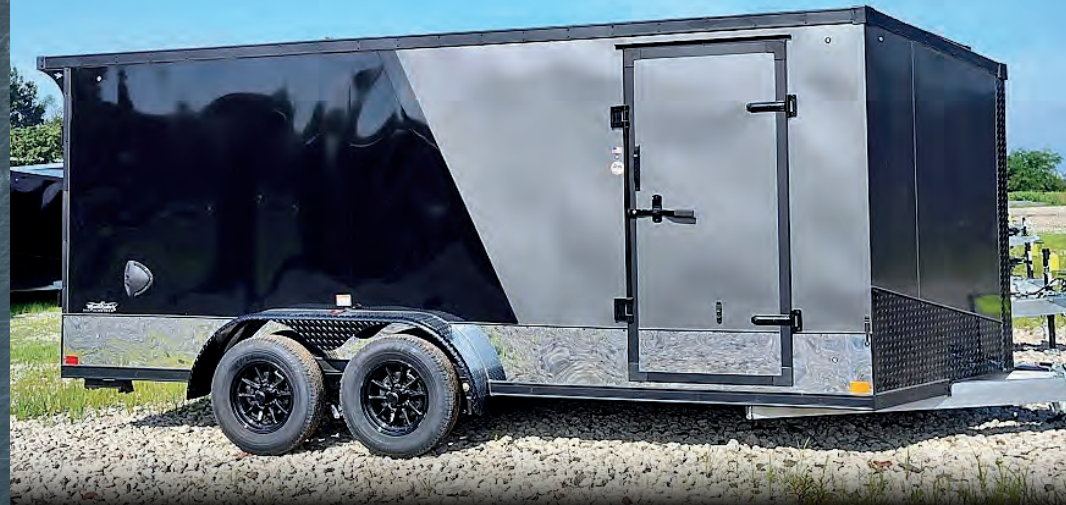
**SIZE RANGE**  
7x17 to 8.5x33

**GVWR**  
7000# to 15600#

## BLACKHAWK PACKAGES

- 1 Pair Rear Fold Down Stabilizer Jacks
- Motorcycle Wheel Chocks Included (1 for SA, 2 for TA)
- 5000# Recessed Floor D-Rings Include (4 for SA, 8 for TA) Installed per Motorcycle Setup
- 2-Tone Color with 4" Brite Divider Strip
- 12" Brite Anodized Aluminum Along Bottom C/S/ & R/S
- Brite Rear Hoop
- 12V LED Loading Light Above Rear Ramp
- ATP Transition Flap
- "Blackhawk" Logos

**Blackhawk**



Available in the Mustang, Titan and Cobra Series

Shown with Optional  
Black Out Package



Look no further for an Aluminum framed snowmobile trailer. Stealth Predator models look better and last longer. Order your Predator in a variety of sizes for 2-place, 4 or even 6-place sled hauling.

\*\*\* POPULAR \*\*\*

## STANDARD FEATURES

- 16" O/C Tube Floors, Walls and Ceiling
- Integrated Frame on 7" Wide Models
- 32" Stone Guard
- Side Door with RV Flush Lock & Bar Lock
- Directional Aluminum Sidewall Vents
- 2 5/16" Demco Coupler with 7,000# Drop Leg Jack
- [3] 12V Loading Lights, [1] Front, [2] Rear above Ramp Doors
- Hingeless Ramp Extensions
- Stainless Steel Freezer Locks on Front and Rear Ramp Doors
- White Vinyl Interior Walls and Ceiling with Colored Aluminum Cove Molding
- 3/4" Drymax Flooring
- .030 Screwless Aluminum Exterior [12 Standard Colors]
- 3" Top & Bottom Trim
- Cast Aluminum Rear Corners
- [1] Pair Aluminum Flo-Thru Sidewall Vents
- L.E.D. Lights Interior and Exterior
- Front and Rear Ramp Doors
- Seamless Aluminum Flat Top Roof
- Single Front & Rear Recessed Flush Latches
- Aluminum Wheels w/Radial Tires
- H/D Recessed Floor D-Rings
- Limited 3-Year Structural Warranty



Shown with Optional Two-Tone Package



Deck Over 8.5' Model

## SPECIFICATION

\*\*\* HIGHLIGHTS \*\*\*

	7 x 17 TA	7 x 19 TA	7 x 23 TA	7 x 25 TA	7 x 27 TA	7 x 29 TA	8.5 x 17 TA	8.5 x 21 TA	8.5 x 25 TA	8.5 x 29 TA
<b>Overall Length</b>	19'-9"	21'-9"	25'-9"	27'-9"	29'-9"	31'-9"	19'-3"	23'-3"	27'-3"	31'-3"
<b>Overall Width</b>	102"	102"	102"	102"	102"	102"	102"	102"	102"	102"
<b>Overall Height*</b>	7'-10"	7'-10"	7'-10"	7'-10"	7'-10"	7'-10"	8'-9"	8'-9"	8'-9"	8'-9"
<b>Platform Height**</b>	20"	20"	20"	20"	20"	20"	28 1/2"	28 1/2"	29 1/2"	30 1/2"
<b>Interior Height</b>	6'-0"	6'-0"	6'-0"	6'-0"	6'-0"	6'-0"	6'-0"	6'-0"	6'-0"	6'-0"
<b>Interior Overall Length</b>	16'-7"	18'-7"	22'-7"	24'-7"	26'-7"	28'-7"	16'-7"	20'-7"	24'-7"	28'-7"
<b>Interior Width</b>	80"	80"	80"	80"	80"	80"	96"	96"	96"	96"
<b>Payload Capacity</b>	5480	5384	5120	5020	4978	4952	5475	5250	4819	4615

\* Overall height does not include roof vents or A/C. Please add 4" for roof vents and 13" for A/Cs.

\*\*\*The above represents our most popular models. See your Stealth dealer to order custom sizes.

\*\* Platform height drops 4" with 48" beavertail and drops 5" with 72" beavertail on 8.5' models.

\*\*8.5' models are deck overs

\*\*Lengths include 5' Slant Wedge

COMPLETE DETAILS

[stealthtrailer.com/predator](http://stealthtrailer.com/predator)



\*\*\* POPULAR \*\*\*

## STANDARD FEATURES

- Seamless Aluminum Roof
- (9) 1200# In-Floor Rope Ties (Surface Mounted)
- 16" O/C 3/8" Drymax Kickplate on Walls
- 24" - 3/4" Drymax Kickplate (on wall liner)
- 24" O/C 3/4" Drymax Flooring
- 24" O/C Roof Bows
- .024 Aluminum Exterior (White, Black, Pewter and Charcoal)
- LED Marker Lights
- (1) Pair Plastic Sidewall Flo-Thru Vents
- Flat Top Roof with 5' Slanted Wedge
- (2) 12V LED Dome Light with Switch
- Aluminum Door Holdback
- Heavy-Duty 3" Extruded Top & Bottom Trim
- 16" ATP Stone Guard
- 7000# Drop Leg Jack
- 7-Way Electrical Plug
- Stainless Steel Door Hardware
- Radial Tires on Gray Steel Wheels
- Limited 3-Year Structural Warranty



COMPLETE DETAILS

[stealthtrailer.com/apache](http://stealthtrailer.com/apache)

With the Apache, we engineered the ultimate aluminum snowmobile trailer at a more affordable price. We've provided more room for loading and securing sleds, rugged construction, smart aesthetics and snowmobiler-friendly standards and options found nowhere at this price point. Circle your sleds around an Apache and ride with Stealth's quality reputation at a better price.



## SPECIFICATION

\*\*\* HIGHLIGHTS \*\*\*

	7 x 17 TA	7 x 19 TA	7 x 23 TA	7 x 25 TA	7 x 27 TA	7 x 29 TA	8.5 x 17 TA	8.5 x 21 TA	8.5 x 25 TA	8.5 x 29 TA
<b>Overall Length</b>	19'-9"	21'-9"	25'-9"	27'-9"	29'-9"	31'-9"	19'-3"	23'-3"	27'-3"	31'-3"
<b>Overall Width</b>	102"	102"	102"	102"	102"	102"	102"	102"	102"	102"
<b>Overall Height*</b>	7'-10"	7'-10"	7'-10"	7'-10"	7'-10"	7'-10"	8'-9"	8'-9"	8'-9"	8'-9"
<b>Platform Height**</b>	20"	20"	20"	20"	20"	20"	28 1/2"	28 1/2"	29 1/2"	30 1/2"
<b>Interior Height</b>	6'-0"	6'-0"	6'-0"	6'-0"	6'-0"	6'-0"	6'-0"	6'-0"	6'-0"	6'-0"
<b>Interior Overall Length</b>	16'-7"	18'-7"	22'-7"	24'-7"	26'-7"	28'-7"	16'-7"	20'-7"	24'-7"	28'-7"
<b>Interior Width</b>	80"	80"	80"	80"	80"	80"	96"	96"	96"	96"
<b>Payload Capacity</b>	5480	5384	5120	5020	4978	4952	5475	5250	4819	4615

\* Overall height does not include roof vents or A/C. Please add 4" for roof vents and 13" for A/Cs.

\*\*\*The above represents our most popular models. See your Stealth dealer to order custom sizes.

\*\* Platform height drops 4" with 48" beavertail and drops 5" with 72" beavertail on 8.5' models.

\*\*8.5' models are deck overs

\*\*Lengths include 5' Slant Wedge



# SPECIALTY

BBQ/CONCESSIONS | LANDSCAPE/CONSTRUCTION | MOBILE OFFICE/FLEET | LAW ENFORCEMENT/MUNICIPAL



**Stealth Trailers Notice:**

Due to constant product improvements, and changes in specifications, component parts and standard/optional equipment, all Stealth Trailers products are subject to change without notice or obligation. Product photography or diagrams may show equipment that is optional. Stealth Trailers reserves the right to make changes in pricing and models and to discontinue models without notice or obligation. Components, parts or chassis may have been manufactured at times other than the model year indicated. All capacities are approximate and dimensions are nominal. All dry weights are based on standard models with basic features and do not include optional features or equipment. Various components and features may differ to conform to local codes. The individual manufacturers not Stealth Trailers warrant appliances and other components.



\*\*\* POPULAR \*\*\*

## WE KNOW BBQ AND CONCESSIONS!

Don't let smoke get in your eyes – this is just our basic BBQ package!

- 8" Main Frame Upgrade w/2x5 Tube Crossmember
- 12" O/C Floor Crossmembers in Rear Porch Area
- 4', 6', or 8' Rear Porch - Open on 3 sides at Rear
- 32" Economy RV Door at Rear Porch Wall
- White Aluminum Ceiling Liner (Rear Porch)
- Scorpion Coated Floor (Rear Porch)
- Marble Vinyl Floor (Main Interior Floor)
- 4' x 8' Concession Window (Need Configuration)  
- Tempered Glass, Screen, & Vending Door
- (1) 12" W Exterior Detachable Aluminum Countertop
- Roof Vent with Prep & Wire for A/C
- (2) Fold Down Rear Stabilizer Jacks
- (2) 4" Aluminum Door Holdbacks
- RV Style Pull Out Step (For Side Door)
- White Vinyl Walls (IPO 3/8" Drymax)
- White Vinyl Ceiling Liner (w/Colored Aluminum Cove Moulding)
- Insulated Sidewalls & Insulated Ceiling
- (3) Total LED Dome Lights w/(2) 3-Way 12V Switches
- 12V Marine Battery w/Box on Tongue
- 50 Amp Panel Box w/50' Motorbase Plug & Twistlock Cord
- (4) Interior GFI Receptacles
- (2) 110V 4' LED Lights
- (1) 110V Exterior 4' Fluorescent Light on Porch w/Switch
- (2) 110V Exterior GFI Receptacles
- Smoke / CO Detector



Deluxe Package Also Available - See Your Dealer for Details



# CONSTRUCTION AND WORK – WE ARE ON THE JOB!

Stealth Trailers work as hard as they play. Customize a trailer to meet your exact requirements..



TOOL CRIB TRAILER



FRONT LADDER



DOUBLE REAR DOORS W/REMOVABLE RAMPS



★ ★ ★ POPULAR ★ ★ ★

## STEALTH TRAILERS AT WORK

### CONTRACTOR'S PACKAGE

- Requires 5200# Axles Minimum
- 1/4" Wall Main Frame & A-Frame Tubes
- 3/4" Drymax Wall Upgrade and Luan Above Roof Bows
- 12" O/C Steel Tube Floor Crossmembers
- Full Height Outriggers
- 16" O/C 1x2 Steel Tube Wall Posts
- 66" Triple Tube Tongue (66" from Zero Point to Ball)
- 2-5/16" Adjustable Coupler with 7,000# Drop Leg Jack
- (3) Aluminum Ladder Roof Racks (Evenly Spaced)
- Removable Front Ladder
- ATP Full Height Behind Ladder
- ATP Cover on A-Frame Under Ladder
- 1 Pair Upgraded Aluminum Salem Vents, (1 on R/S-Front High, 1 on C/S Rear Low)
- (2) Upgraded 11" 12V Deluxe LED Dome Lights (Centered and Evenly Spaced)
- (2) 3-way 12V Switches (1 Inside Side Door, 1 Inside Rear Door on C/S Wall)

### BASIC LANDSCAPE PACKAGE

- 66" Triple Tube Tongue (66" from Zero Point to Ball)
- 1 Pair Upgraded Aluminum Salem Vents, (1 on R/S-Front High, 1 on C/S Rear Low)
- (2) 14" x 14" Roof Vents (Centered & Evenly Spaced)
- 3/4" x 12" Tall Drymax Kick Plate at Base of R/S, C/S & Front Walls
- 3/4" Drymax Floor
- (8) 1,200# Recessed Wall Rope Ties, 4 Each Side and Evenly Spaced (36" AFF) Above Finished Floor
- (2) Total Ramp Door Grab Handles (1 on Left Side, 1 on Right Side of Door)
- (2) 12V 3-way Switches (1 Inside Side Door, 1 Side Rear Door on C/S Wall)

Deluxe Package Also Available

- See Your Dealer for Details



\*\*\* POPULAR \*\*\*

## MOBILE OFFICE / FLEET TRAILERS

Let Stealth Trailers customize a mobile office solution for your company. From mobile construction headquarters, to emergency response, communications and logistics centers, Stealth has the platform to meet your demands.

Fleet trailers with the same features and options are contracted by Stealth for any use from fiber optics repair to food service. Commitment to multiple trailers run on the Stealth manufacturing assembly line will reduce your cost.







\*\*\* POPULAR \*\*\*

## LAW ENFORCEMENT/ FIRE & RESCUE/ MEDICAL/MUNICIPAL

From SWAT trailers and command centers, to EMT, military and community affairs and special project configurations, Stealth Trailers can engineer and build the trailer to serve and protect.

Stealth designs trailers for municipal, city and town maintenance, road crews and fire departments. Contact Stealth at: [www.stealthtrailers.com](http://www.stealthtrailers.com) for more details.



# OPTIONAL EQUIPMENT



**ROOF LADDER RACK** - Welded, tubular aluminum ladder racks come in a variety of sizes to accommodate any size trailer.



**FRONT DECK WITH LADDER** - This sturdy front deck with ladder provides easy access to roof ladder racks—safer and more convenient.



**SPARE TIRE MOUNT** - Always handy, this spare tire mount keeps a full sized tire ready for repair.



**ALUMINUM WHEELS** - Standard on Cobra & Predator Models.



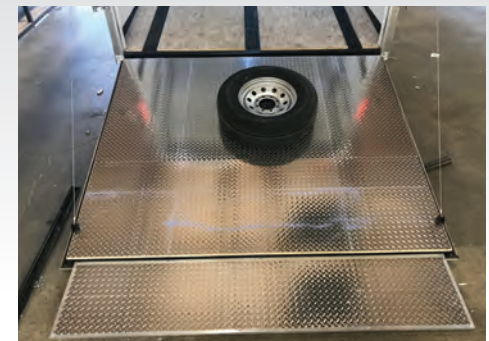
**EXTENDED TUBE TONGUE** - Tongue extensions are available to accommodate specialty tow vehicles.



**OPTION THE PERFECT COUPLER** - Choose from Pintle-eye, Bull Dog, Demco and adjustable couplers to meet your service demands.



**40" SPREAD AXLES**



**RAMP DOORS** - Stealth engineers a ramp door to meet your needs—work or play.



**CONCESSIONS VENDOR WINDOWS** - Sliding, automotive glass concession/vendor windows are available in a variety of sizes with or without screens.



**GENERATOR DOORS** - Lockable generator doors give shelter and security for on-board power with ample ventilation.



**ROOFTOP ESCAPE HATCH** - This escape hatch comes with a quick release push and optional aluminum ladder. The hatch also serves as a skylight and operable air vent. Requires Walk-on Roof option.



**DOUBLE SIDE-ENTRY DOORS** - Double-side entry doors expand the access to the interior of your trailer.



# OPTIONAL EQUIPMENT



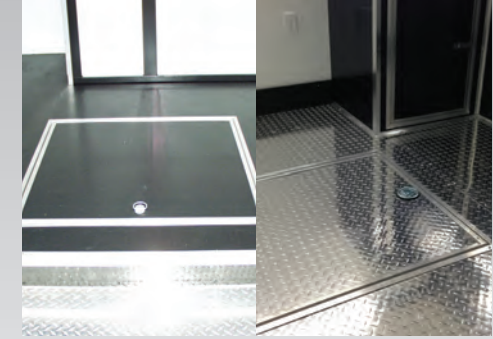
**MARQUEE DOORS WITH PIES** - Optimum foot traffic and maximum sign space makes your Stealth Trailer a traveling moneymaker. Swing-up doors with pies lock easily and solidly in place.



**2-TONE & BLACK OUT EXTERIOR PACKAGES**



**REAR FLAIR WITH LOADING LIGHTS**



**RECESSED TIRE COMPARTMENT** - Large enough for a full-size spare trimmed to match trailer floor.



**CUSTOM ALUMINUM CABINERY** - Stealth custom cabinetry is available in dozens of configurations for mechanics shops to mobile office space.



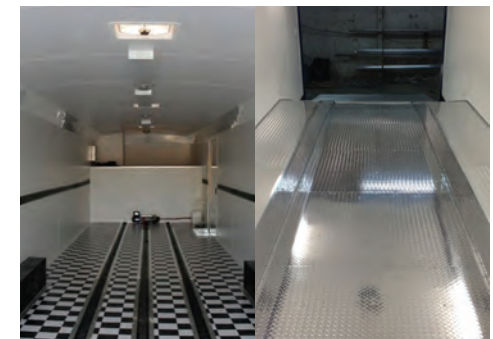
**CUSTOM INTERIORS** - Choose a combination that provides the best environment for your work or play needs.



**FUEL DOORS** - Fuel doors are a common option for snowmobile, ATV, motorcycle and landscape trailers, fuel doors make re-fueling easy. Standard on Apache & Predator models.



**BASEBOARD HEATING SYSTEM** - A must for the year-round roving workshop. The self-contained unit comes with an optional adjustable thermostat control.



**CUSTOM FLOORING** - Choose from a variety of custom flooring materials that include checkered flag vinyl, or non-skid ATP plating (ramp-over wheel wells shown here) ... and more.



# OPTIONAL EQUIPMENT



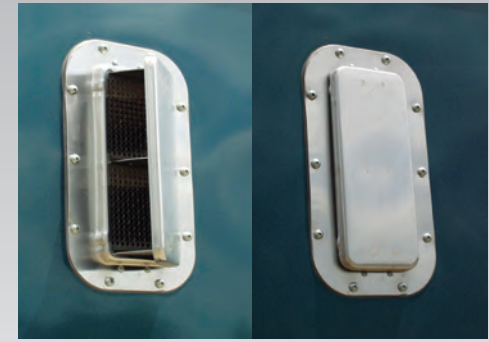
**ROOF AIR CONDITIONING** - This roof mounted air-conditioning unit has directional vents, variable temperature knob, and three-position cool and fan.



**TRANSLUCENT ROOFING**- An easy solution to light inside of the trailer during the working day—a common option for enclosed construction and landscape trailers.



**POP-OUT SLEEPER TENTS**



**ALUMINUM DIRECTIONAL VENT** - Ventilation is an important safety and health consideration. This all aluminum 2-way sidewall vent allows you to control airflow.



**PASSIVE ROOF VENT** - These vents can be configured to draw air into the trailer and include crank handles and screens. Powered vents are also available.



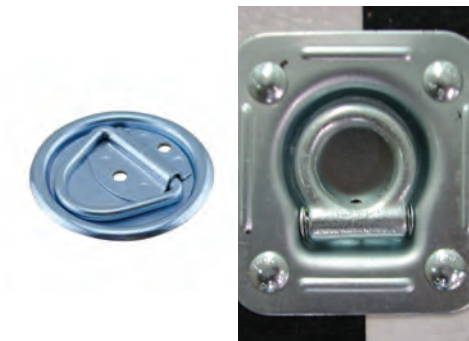
**MAXAIR VENT**- Choose this vent cover to prevent leaks and leave open while driving.



**5 OR 7 DRAWER CABINETS**



**E-TRACK WALL & FLOOR TIE-DOWNS** - Flush-mount E-Track tie-downs are mounted to any point that you specify on the interior wall or floor of your trailer.



**D-RING WALL & FLOOR TIE-DOWNS** - Both floor and wall D-Ring tie-downs use a hinged ring design that folds out of the way when not in use.



**HEAVY DUTY JACK** - This fixed-mount heavy duty jack is installed to take the maximum load on its oversized foot.



**5,000 LB SCISSOR JACKS** - Steady footing; optimal weight distribution and an extended crank handle all come with this heavy-duty accessory.



**12-VOLT POWERED TONGUE JACK** - This power jack makes hooking up to heavy-trailers as easy as the push of a button.



# OPTIONAL EQUIPMENT



**12-VOLT POWER WINCH** - Add this 12-volt powered winch system to the floor of your transporter for maximum safety when handling valuable cars and heavy equipment.



**MOTORCYCLE WHEEL CHOCKS** - Wheel chocks are easily removable—opt for the flush-mounted in-floor steel models.



**AUXILIARY OUTLETS** - Stealth can customize wiring with hookups and outlets to provide the service you prefer.



**ELECTRICAL OUTLETS** - Have your trailer custom wired to your specifications. Choose from 110V, 110V interior and exterior GFIs, USB and 15, 30 or 50 Amp shore power.



**EXTERIOR LIGHTING** - From powerful halogen floods, to our two types of high-efficiency scene lighting.



**INTERIOR LIGHTING** - Interior LED lighting options include domes, strips and diffused fixtures.



**ELECTRICAL SERVICE** - Choose from 15, 30, 50 Amp service with a wide array of lighting and power outlets. Shown here, a 45 Amp RV service to handle accessories.



**POWER AWNINGS** - Optional awnings, available in 8' to 25', maximize your comfort outside—work or play.



**GENERATORS** - Order your Cummins/Onan generator from Stealth in gas, LP or diesel in a wide variety of power choices.



# OPTIONAL EQUIPMENT





# OPTIONAL EQUIPMENT



8.5' WIDE DECK-OVER APACHE

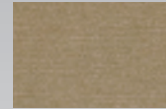


CUSTOMIZED CONFIGURATIONS FOR CAR HAULERS / SNOWMOBILE PACKAGES

AVAILABLE COLOR OPTIONS



PEWTER



CHAMPAGNE BEIGE



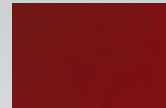
INDIGO



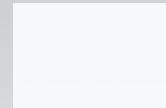
SILVER



CHARCOAL



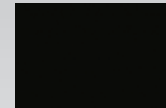
BRANDYWINE



WHITE



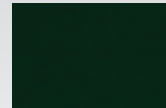
VICTORY RED



BLACK



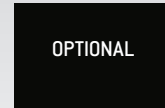
PENSKE YELLOW



CARGO GREEN



ORANGE



OPTIONAL

MATTE BLACK



2 TONE EXAMPLE



2 TONE EXAMPLE



7' PREDATOR SHOWN WITH OPTIONAL 2-TONE PACKAGE



# THREE YEAR LIMITED STRUCTURAL WARRANTY

## INITIAL RETAIL PURCHASER

Stealth Trailers warrants to the original owner that your trailer will be free from structural defects in materials and workmanship for period of 1 or 3 years from retail purchase providing all conditions have been met. The warranty obligation consists of and is limited to repairing and replacing any part, or parts, which in the opinion of the factory are defective under normal use during the 1 or 3 year period, starting at the date of retail purchase.

## ONE YEAR SPECIFIC ITEM LIMITED WARRANTY

- Windows
- Doors
- Locks
- Electrical Components
- Plumbing Components
- Aluminum Components
- Paint & Undercoat
- Seals & Sealants
- Exterior Corrosion

## ITEMS NOT WARRANTED BY STEALTH TRAILERS THAT ARE COVERED UNDER COMPONENT PARTS MANUFACTURER'S WARRANTY (INCLUDED IN OWNER'S PACKET)

- Tires
- Light Fixtures
- Axles
- Plywood
- Fiberglass Parts
- Wheels
- Windows
- Jacks
- Couplers
- Hoist
- Winches
- Water Heaters
- Furnace
- Air Conditioners
- Microwaves
- TV & Radio
- Generators
- Refrigerators
- Concession Windows



## EXPLICIT WARRANTY EXCLUSIONS - ITEMS NOT COVERED BY LIMITED WARRANTY

1. Deterioration of paint and appearance due to use and exposure.
2. Tow Vehicle wear, wiring and improper hitch usage.
3. Damage caused by loose screws, nuts, lug nuts and bolts. It is the owner's responsibility to maintain proper tightness.
4. Damage or deterioration caused by salt, road grime, normal wear and tear, application of or exposure to corrosive chemicals, other corrosive materials (including, but without limitation, magnesium chloride or calcium chloride), or arising from an accident or use of the product. Stealth Trailers reserves the right to test individual parts for exposure to these materials; these materials are extremely corrosive to all metals.
5. Damages arising from exposure to them is not covered by this warranty.
6. Damage caused by misuse, overloading, negligence, alteration or failure to provide necessary repairs and maintenance on an "as needed" basis.
7. Stealth Trailers will not pay for lost revenue, cost of cargo, rental of substitute equipment, towing charges, cost of service calls, cost related to delivering trailer to dealer or Stealth Trailers for warranty repairs or cost of work done by others or inconvenience.
8. Stealth Trailers will not be responsible for any aftermarket accessories, graphics, company logos, or any artwork that has been added to the interior or exterior of trailer.
9. This warranty will be voided by any repair or modification to the trailer, or addition of accessories to the trailer by anyone other than Stealth Trailers or an authorized Stealth dealer. The manufacturer will not be responsible for work performed by a non-Stealth dealer or service center, unless manufacturer gives prior written authorization.

ANY EXPRESS WARRANTY NOT PROVIDED HEREIN, AND ANY REMEDY FOR BREACH OF CONTRACT WHICH BUT FOR THIS PROVISION MIGHT ARISE BY IMPLICATION OR OPERATION OF LAW, IS HEREBY EXCLUDED AND DISCLAIMED. THE IMPLIED WARRANTIES OF MERCHANTABILITY AND OF FITNESS FOR ANY PARTICULAR PURPOSE ARE EXPRESSLY LIMITED TO A TERM OF ONE (1) YEAR. SOME STATES DO NOT ALLOW LIMITATIONS ON HOW LONG AN IMPLIED WARRANTY LASTS, SO THE ABOVE LIMITATION MAY NOT APPLY TO YOU. UNDER NO CIRCUMSTANCES SHALL STEALTH TRAILERS BE LIABLE TO PURCHASER OR ANY OTHER PERSON FOR ANY SPECIAL, INCIDENTAL OR CONSEQUENTIAL DAMAGES, WHETHER ARISING OUT OF BREACH OF WARRANTY OR BREACH OF CONTRACT. SOME STATES DO NOT ALLOW THE EXCLUSION LIMITATION OF INCIDENTAL OR CONSEQUENTIAL DAMAGES SO THE ABOVE LIMITATION MAY NOT APPLY TO YOU. THIS WARRANTY GIVES YOU SPECIFIC LEGAL RIGHTS AND YOU MAY ALSO HAVE OTHER RIGHTS, WHICH VARY FROM STATE TO STATE.

## WARRANTY VALIDATION

A warranty registration form must be completed and signed by Purchaser at the time of retail sale and mailed direct to the factory within 10 days from the date of sale. This is a federal requirement. Failure to fill out the registration form and return it within the above period will automatically void the warranty. The warranty is nontransferable from the original owner.

## HOW TO OBTAIN SERVICE

Please contact your selling Dealer for all Warranty and Service needs. All warranty service work should be performed by your selling Dealer or an Authorized Stealth Dealer in your immediate geographic area.

VISIT [stealthtrailer.com](https://stealthtrailer.com) AND SEE OUR ENTIRE FLEET OF TRAILERS.

## STEALTH TRAILERS NOTICE:

Due to constant product improvements, and changes in specifications, component parts and standard/optional equipment, all Stealth Trailers products are subject to change without notice or obligation. Product photography or diagrams may show equipment that is optional. Stealth Trailers reserves the right to make changes in pricing and models and to discontinue models without notice or obligation. Components, parts or chassis may have been manufactured at times other than the model year indicated. All capacities are approximate and dimensions are nominal. All dry weights are based on standard models with basic features and do not include optional features or equipment. Various components and features may differ to conform to local codes. The individual manufacturers not Stealth Trailers warrant appliances and other components.

Stealth Enterprises, LLC — © Sept. 2022 Printed in U.S.A.

## OUR MISSION IS CLEAR

The goal at Stealth has always been and always will be to deliver more value to you, the customer. We engineer and construct the very best trailers, and offer an extensive variety of customizable options to adapt to any purpose you may have in mind.



910 Maple Street / Bristol, IN 46507 / (866) 886-5757

[stealthtrailer.com](https://stealthtrailer.com)

YOUR LOCAL STEALTH DEALER: